



Apalachicola Basin Trails

Trail photos by Doug Alderson



First, about Apalachicola Riverkeeper and the river basin. We are dedicated to the protection, restoration and stewardship of the Apalachicola River and Bay...





Apalachicola Riverkeeper... member of the
Waterkeeper Alliance and Waterkeepers Florida



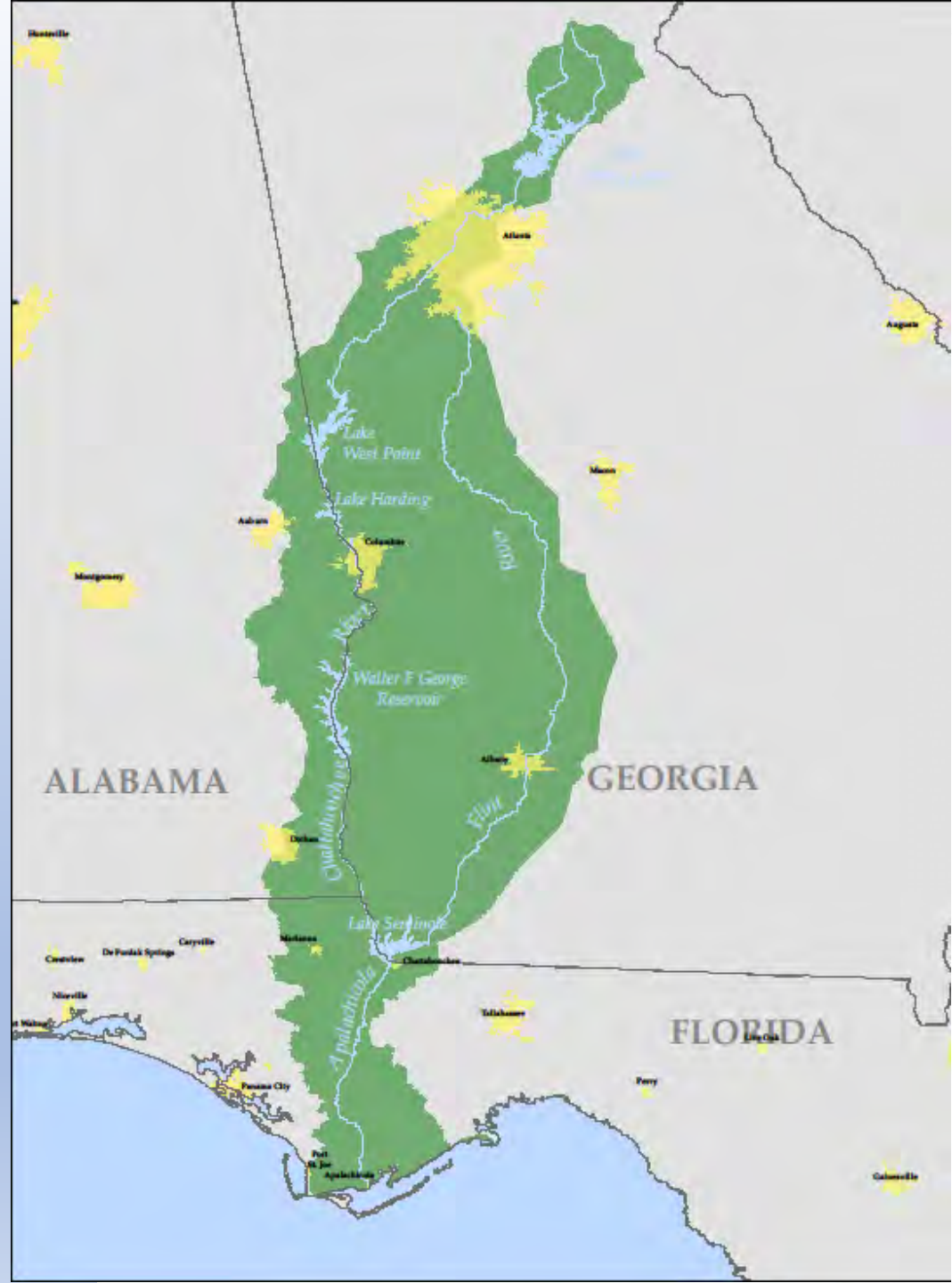


Non-profit group with 2 full-time staff, 2 part-time staff and 1,400 members. Funded through memberships, donations and foundations. Advocacy at local, state and federal levels is a priority.

Apalachicola- Chattahoochee-Flint (ACF) River Basin Ecosystem

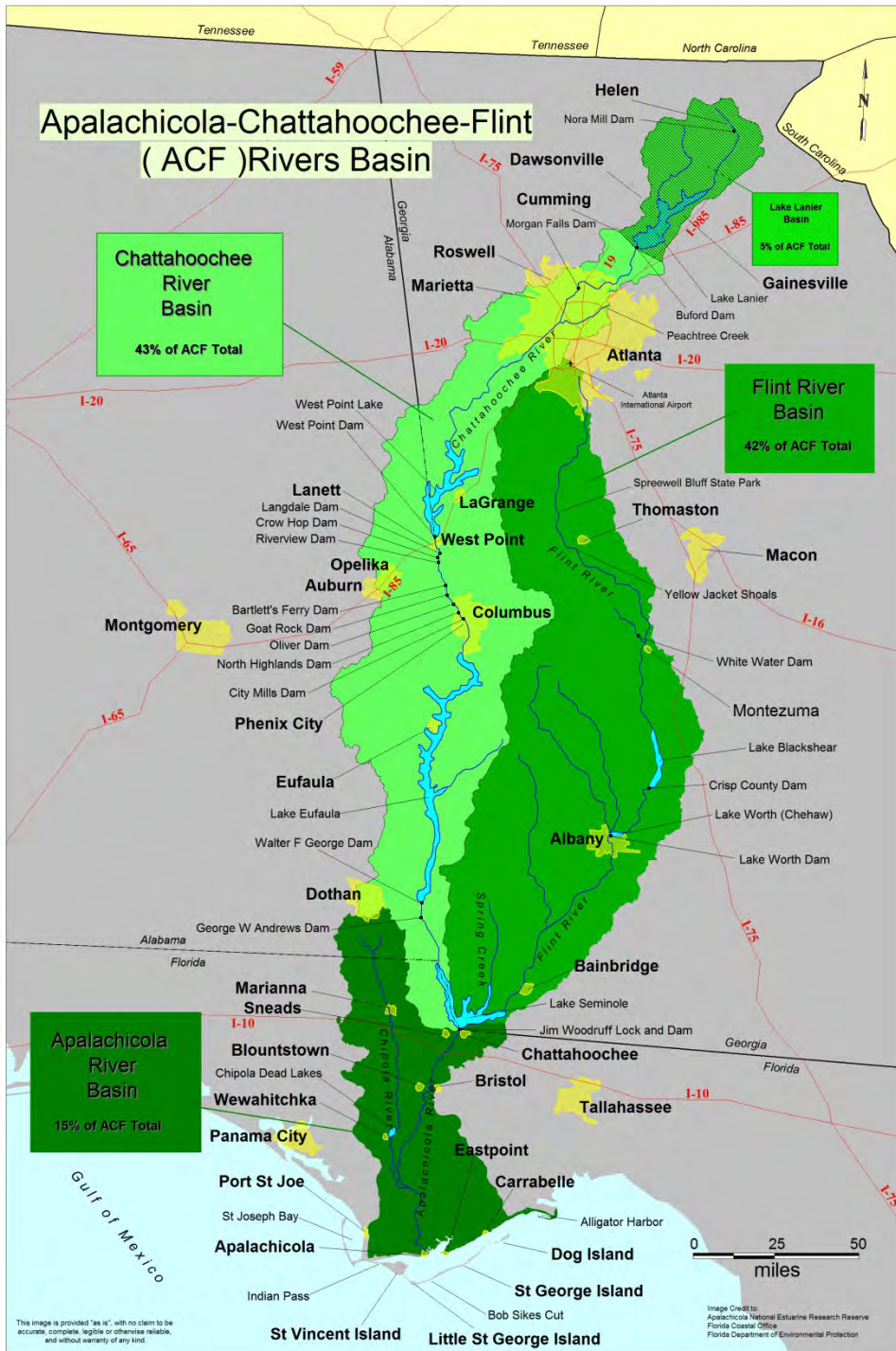
19,600 Square Mile Watershed
spans 550 miles. Apalachicola
Basin is 15% of ACF Basin.

- 4 Geologic Provinces from foothills of the Smoky Mountains to Gulf of Mexico
- 3rd largest river draining to the Gulf of Mexico. Impacting Fisheries 250 Miles out into the Eastern Gulf
- Sustains 8 Million+ People



Apalachicola- Chattahoochee-Flint (ACF) River Basin

- 3 States (AL, FL, GA)
- Chattahoochee River – USACE operates 5 Federal Reservoirs
- Lower Flint & Chipola Rivers - breadbasket of the SE
- Water uses include: Hydropower, Flood Control, Navigation, Ag, M&I, Water Quality, Cooling, Recreation





Primary Threat:

Impacts of low water
on oysters and
livelihoods...



Floodplain
impacts:
4.3 million trees
lost, impacting bay
and tupelo honey
production...

Addressing
problems through
legal challenges,
regional
stakeholder
groups, outreach
and public
education



Slough Restoration Project underway!



East River, Douglas Slough and Spider's Cut will be opened up after being choked off by past dredging practices, reconnecting the sloughs to the main channel during times of low flow. Water will push out into the floodplain during high flows.





Microplastics and water quality sampling and analysis by staff and volunteers





Volunteer River and bay Clean-ups



Eco-educational Outings
on land and water!

APALACHICOLA BASIN TRAIL GUIDE



Maps and guides on website for paddling, hiking and biking in the Apalachicola Basin

Welcome to the Apalachicola Basin Trail Guide webpage. Here is where you can find hiking, biking and paddling trail information for the Apalachicola Basin. We will be scouting and mapping more trails and adding them to the website in the months to come thanks to a \$4,000 grant from the Felburn Foundation, so check back often.

Two FSU students, Tyler Osha and Dasha Kosheleva, created story maps of some of the Apalachicola Basin's many hiking and paddling trails as part of the Sustainability Fellows Program. Tyler is graduating in Environmental Science and Policy while Dasha is finishing her Master's Degree in Urban and Regional Planning. Their story maps, accessed from one's phone or computer, combine interactive maps, photos and descriptions of the trails. Check out Tyler and Dasha's [story map project](#). It doesn't cover every trail in the basin, but it provides a good sampling. Here is a [video](#) of Tyler and Dasha's presentation about the project. And [here is a link](#) to the *Tallahassee Democrat* article about the project.



Fascinating pitcher plant bogs near Sumatra.



Unique dwarf cypress forest in Tate's Hell





More than 1,300 species of plants, including 103 that are threatened or endangered, are found in the Apalachicola drainage basin. The basin is one of six biodiversity hotspots in North America.

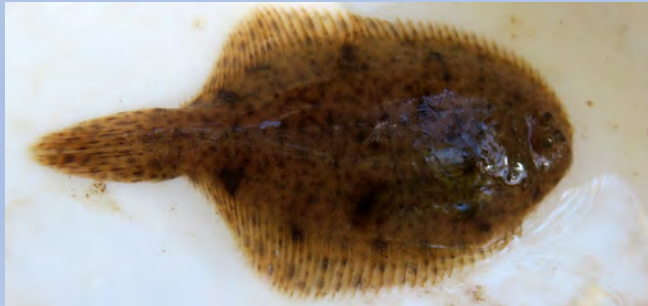
More than 50 species of mammals, including the Florida black bear and the threatened West Indian Manatee, are found in the Apalachicola drainage basin.





More than 282 avian species, including 164 migratory bird species, reside for at least part of the year in the Apalachicola floodplain and bay.

More than 131 species of fresh and estuarine fish live in the Apalachicola River, more varieties than in any other river in Florida. More than 140 species of fish are found in the Bay.



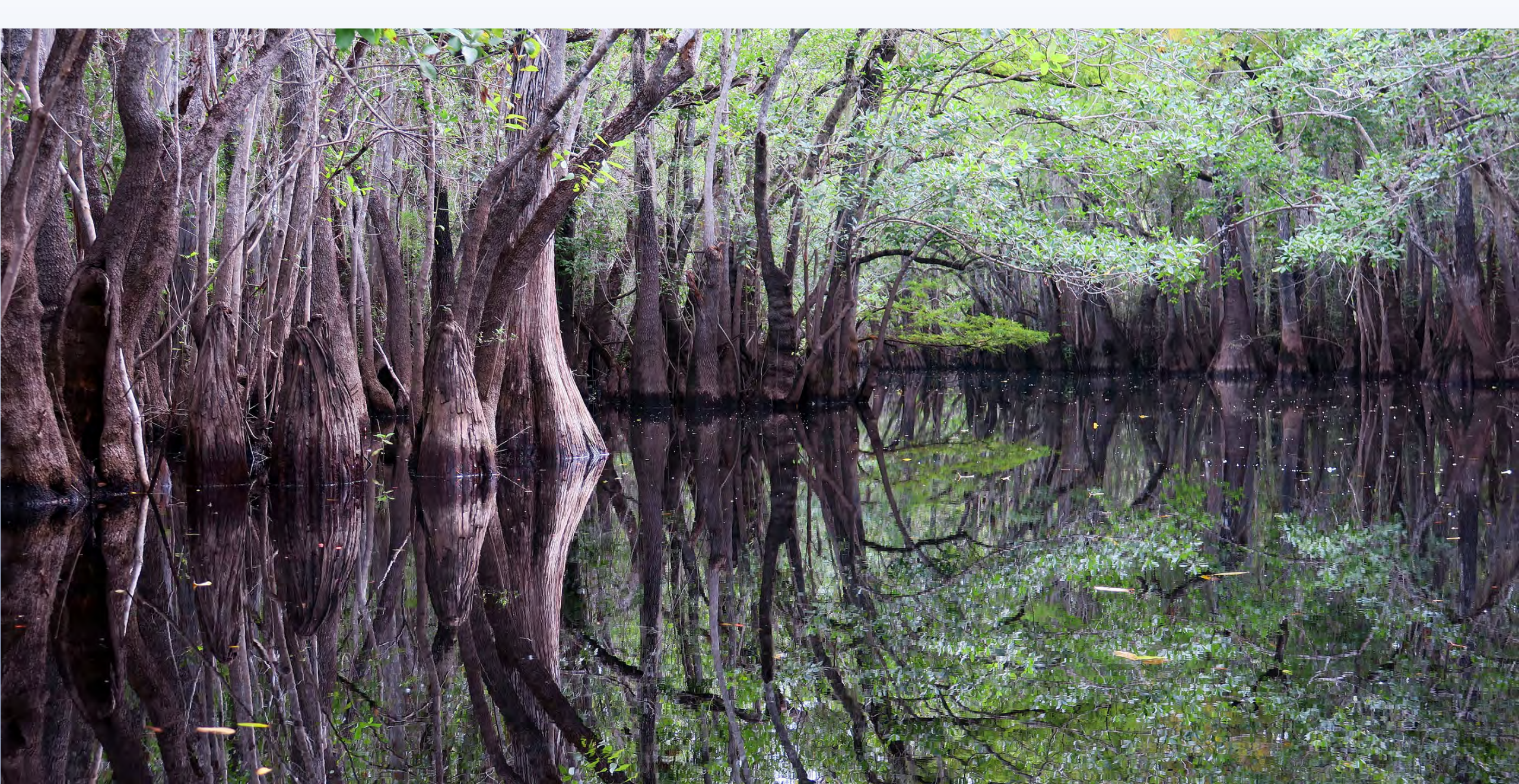


- More than 40 species of amphibians and 80 species of reptiles live in the Apalachicola River basin, the highest diversity in all of the United States and Canada!





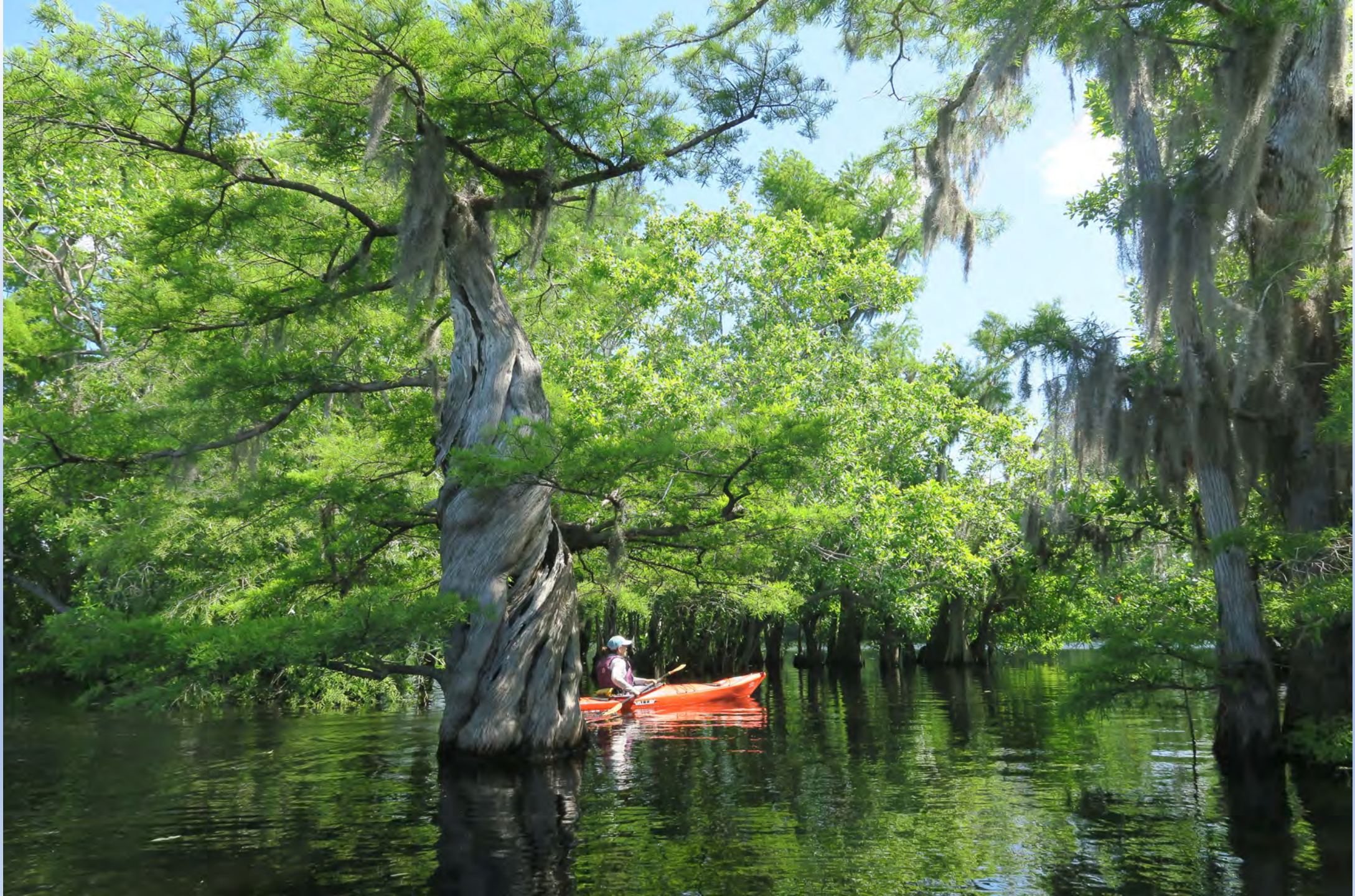
30 federally threatened or endangered animal species inhabit the Apalachicola River Basin. Shown here: track of a Florida black bear, Apalachicola dusky salamander, fat three ridge mussel shells.



Black Creek



Owl Creek





Upper Owl Creek



Hickory Landing along Owl Creek



Devon Creek



Kennedy Creek



Paddling upper Kennedy Creek

Cypress trees
along
Kennedy Creek



Kennedy Creek
Little blue heron



Brown water snake on
Kennedy Creek





Ft. Gadsden Creek, Poplar Creek and South Prong





Poplar Creek



South Prong



Paddling South Prong



Unusual cypress along South Prong





Cash Creek



Access at Cash Creek



High Bluff Creek



Paddling Graham Creek



East River paddlers



New River





West Arm of the Dead Lakes

Lower Dead Lakes





Upper Dead Lakes



Ocheesee Pond

The Chipola
River





Chipola River wonders



Merritt's Mill Pond



Merritt's Mill Pond underwater scenes





106-mile Apalachicola Blueway



View of Alum Bluff along Blueway



Wildlife along the Blueway





Camping along the Blueway

RiverTrek kayakers taking a swim break along the Blueway





Garden of Eden
Trail near Bristol



Along the Garden of Eden Trail



Garden of Eden Trail views





Torrey State Park trails



Torrey State Park scenes along the trails

Florida National
Scenic Trail





Blountstown
Greenway



Gap Point Trail, St. George Island State Park



Gap Point



Enjoy the Trails!

www.apalachicolariverkeeper.org

